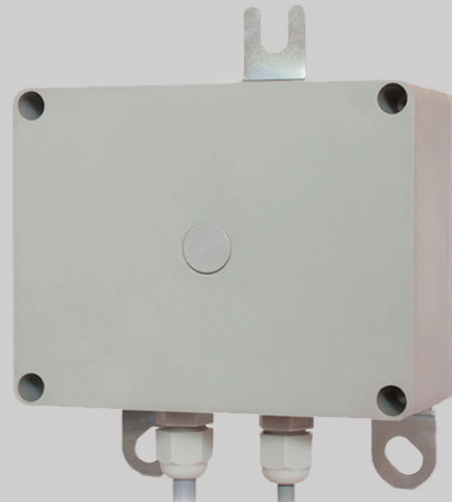


DL220 Power Line Annunciator Sensors



Measure intensity of electromagnetic field of overhead AC power lines 50Hz.

Used as part of safety devices to protect lifting crane boom head against dangerous approach to power line. Have digital input for connection of the load gripper uppermost position limit switch. DL220.14 and DL220.14-01 modifications have two safe power keys for clearance lamp and headlight control. DL220.14-01 modification has an integrated sensor of inclination angle relative to the gravitational vertical.

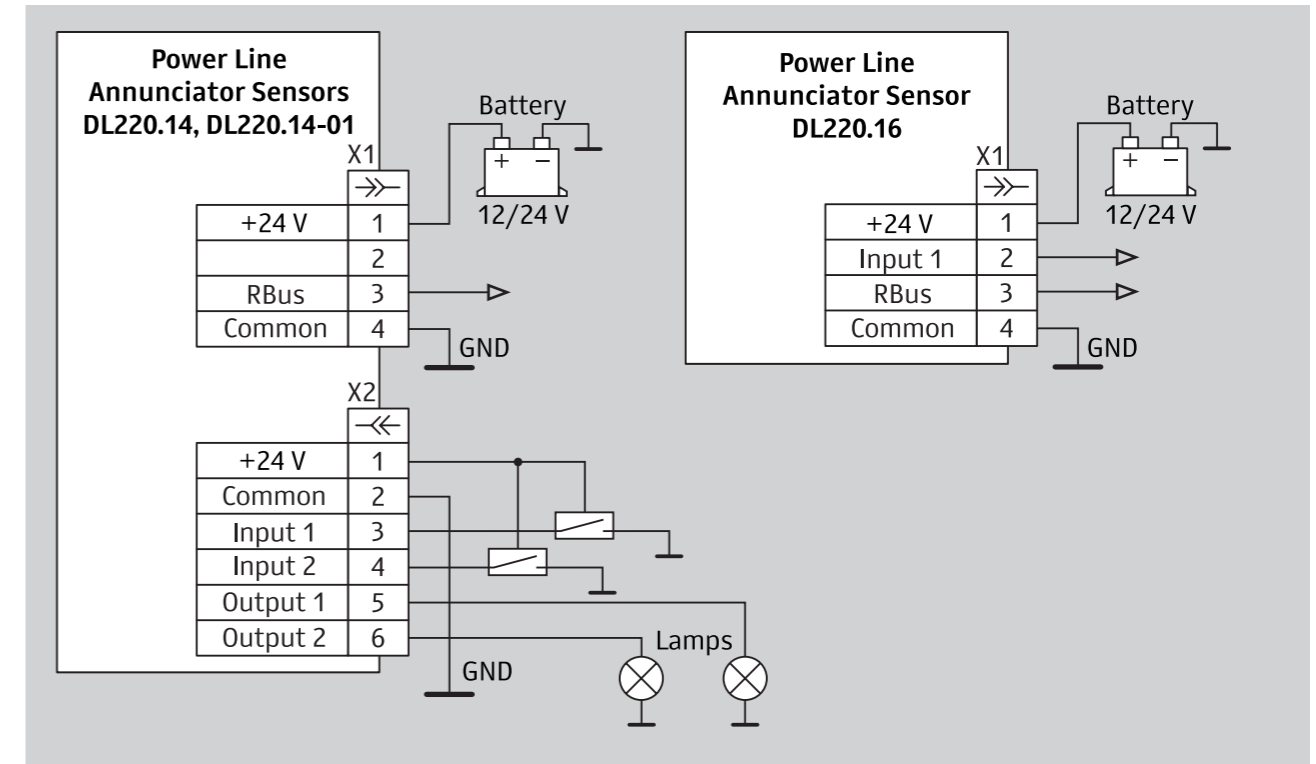
Key features:

- omnidirectional antenna;
- one or two digital inputs;
- up to 2 power outputs with short-circuit protection;
- integrated inclination angle sensor;
- digital data transmission interface.

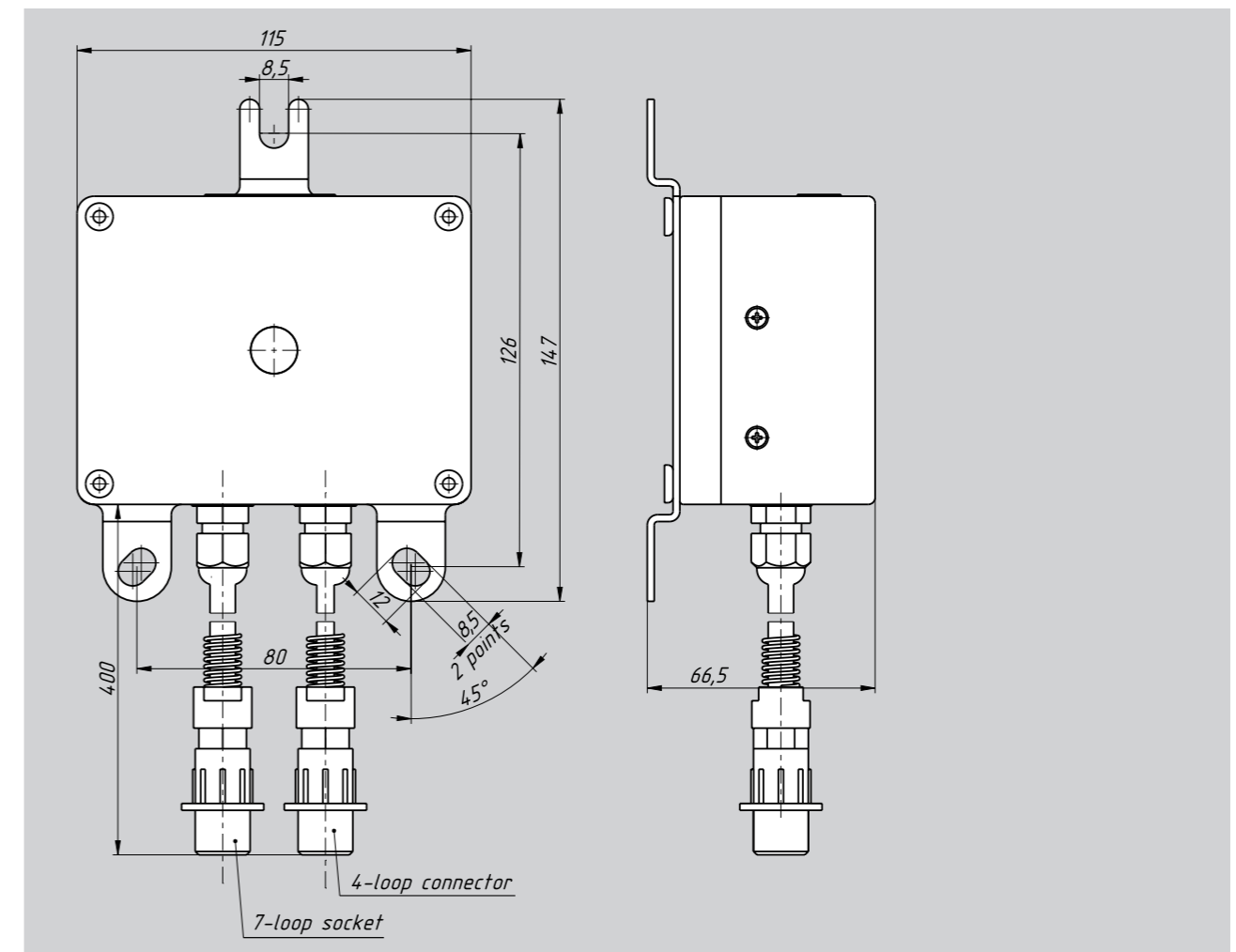
Main specifications

Parameter	Value		
	DL220.14	DL220.14-01	DL220.16
Measuring range of intensity of AC electric field 50Hz	0...16 V/m		
Integrated inclination angle sensor:			
– inclination angle measuring range	–	0...110°	–
– measurement error	–	±0,5°	–
Output signal type	digital serial acc. to ISO 9141		
Number of switched power loads	2		–
Maximum permissible load current	3 A		–
Number of digital inputs	2		1
Electrical connection:			
– supply and communication linevoltage	AMP Superseal 1.5 connector (4 pins)		
– inputs and power outputs	AMP Superseal 1.5 connector (6 pins)		–
Power supply voltage	10...32 V		
Current consumption	max. 0.02 A		
Temperature range:			
– operating	–40...+55 °C		
– limit	–50...+65 °C		
IP rating (as per GOST14254-96)	IP67		
Allowed vibratory loads:			
– maximum acceleration	up to 50 m/s ²		
– within the frequency range	50...250 Hz		
Allowed impact loads	up to 100 m/s ²		
Dimensions	max. 115x146x84 mm		
Weight	up to 910 g		

Wiring scheme



Overall and mounting dimensions



000 Scientific and Production
Enterprise Rezonans
Tel./fax: +7 (351) 7313000, 2544577
ul. Mashinostroiteley, 10B, Chelyabinsk, 454119
www.rez.ru, rez@rez.ru

Our products

Monitoring, protection and control systems
for mobile applications

Safety devices for lifting applications

Sensors

Wireless Devices

Joysticks

Display Consoles and Indicators

Voltage Converters

Relays and Regulators