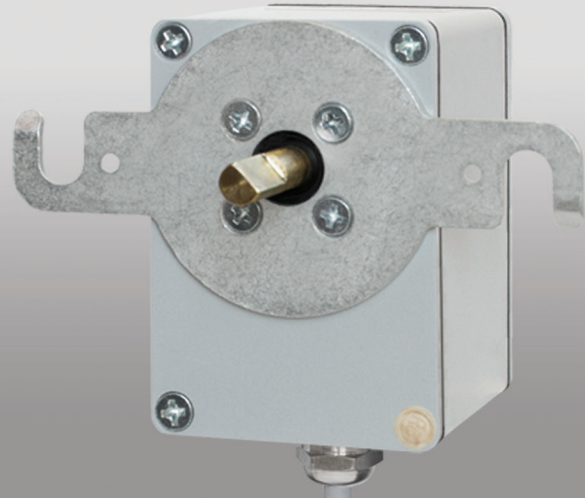


Rotation Angle Sensors DPM20.9



Used as part of monitoring and control systems of road construction machinery to locate their mechanisms.

Based on a microcontroller and microcircuit of a magnetic rotary encoder.

Have an integrated antibacklash gear reducer controlling change in the position of input shaft with the power supply off.

The sensors can be equipped with:

- amplification module (for sensor securing under increased mechanical loads);
- RF transceiver of RFID tag to control position of a non-stationary tower crane at the selected runway points.

Key features:

- digital data transmission interface;
- stainless steel shaft;
- robust metal housing;
- electronic adjustment of the input shaft position without mechanical regulation;
- digital input for limit switch connection.

000 Scientific and Production
Enterprise Rezonans
Tel./fax: +7 (351) 7313000, 2544577
ul. Mashinostroiteley, 10B, Chelyabinsk, 454119
www.rez.ru, rez@rez.ru

Our products

Monitoring, protection and control systems
for mobile applications

Safety devices for lifting applications

Wireless Devices

Sensors

Wireless Devices

Joysticks

Display Consoles and Indicators

Voltage Converters

Relays and Regulators

Support of the sensors currently in use

Old sensor	New sensor
DPM20.3-12.01	DPM20.9-064.01
DPM20.3-12.02	DPM20.9-064.02
DPM20.3-12.03	DPM20.9-064.03
DPM20.3-12.04	DPM20.9-064.04
DPM20.3-12.11	DPM20.9-064.11
DPM20.6-12.01	DPM20.9-128.01
DPM20.6-12.02	DPM20.9-128.02
DPM20.6-12.03	DPM20.9-128.03
DPM20.6-12.04	DPM20.9-128.04
DPM20.6-12.11	DPM20.9-128.11
DPM20.8-12.01	DPM20.9-256.01
DPM20.8-12.02	DPM20.9-256.02
DPM20.8-12.03	DPM20.9-256.03
DPM20.8-12.04	DPM20.9-256.04
DPM20.8-12.11	DPM20.9-256.11