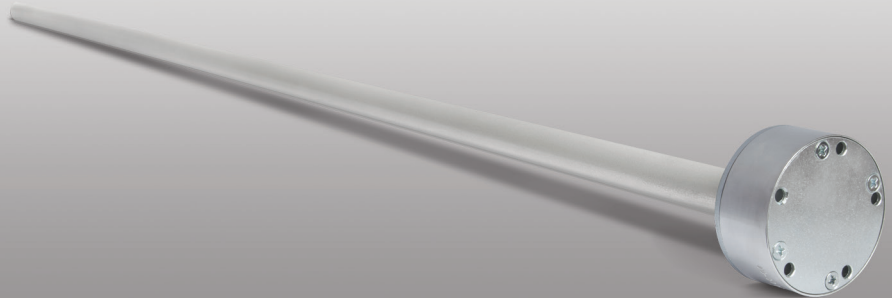


## Fuel Level Sensors DT7.4



Used to monitor diesel fuel level in fuel tanks of motor vehicles and road construction machinery. Used as part of satellite vehicle monitoring systems to control fuel consumption.

The sensors are designed to allow reducing length of the measuring tube to fuel tank height (down to 200 mm).

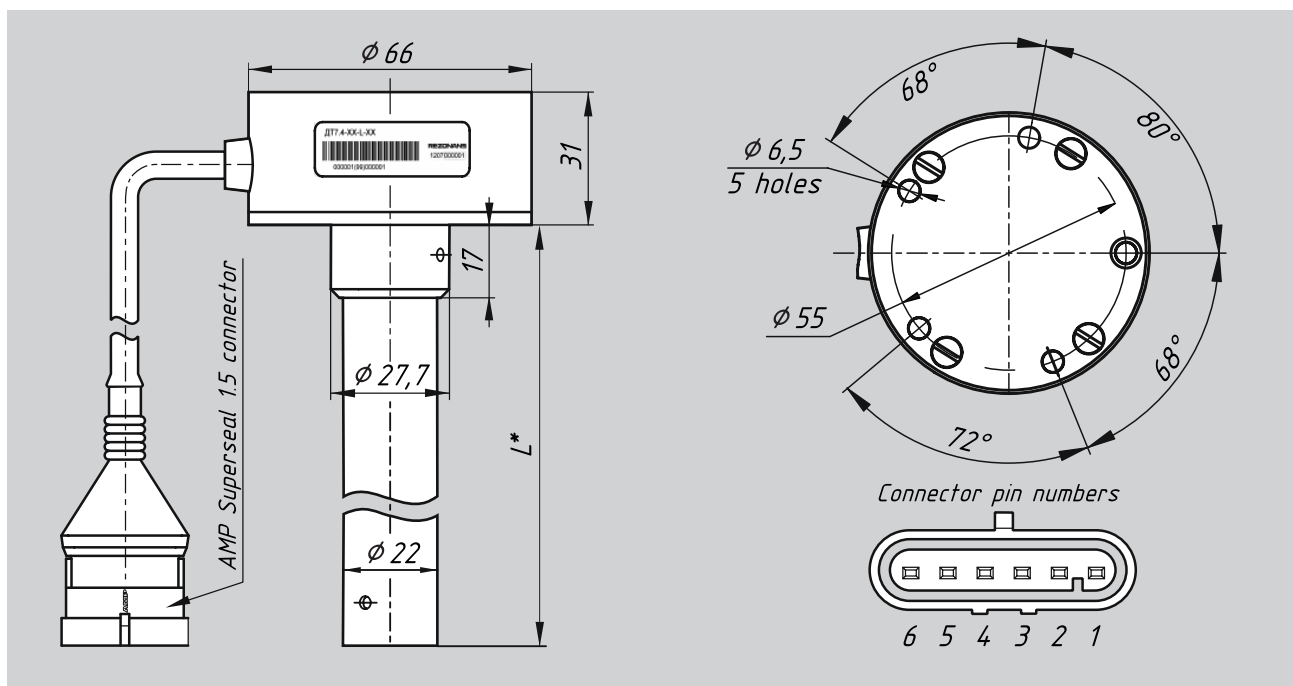
### Key features:

- no moving mechanical parts;
- extended supply voltage and operating temperature ranges;
- integrated temperature compensation;
- galvanic isolation of sensor housing from the common power cable;
- inverse-polarity, short-circuit and misconnection protection;
- modifications with digital or analog interface;
- modifications with different harness length (from 630 mm to 9 m);
- additional protection of the connection cable with metal hose or corrugated hose.

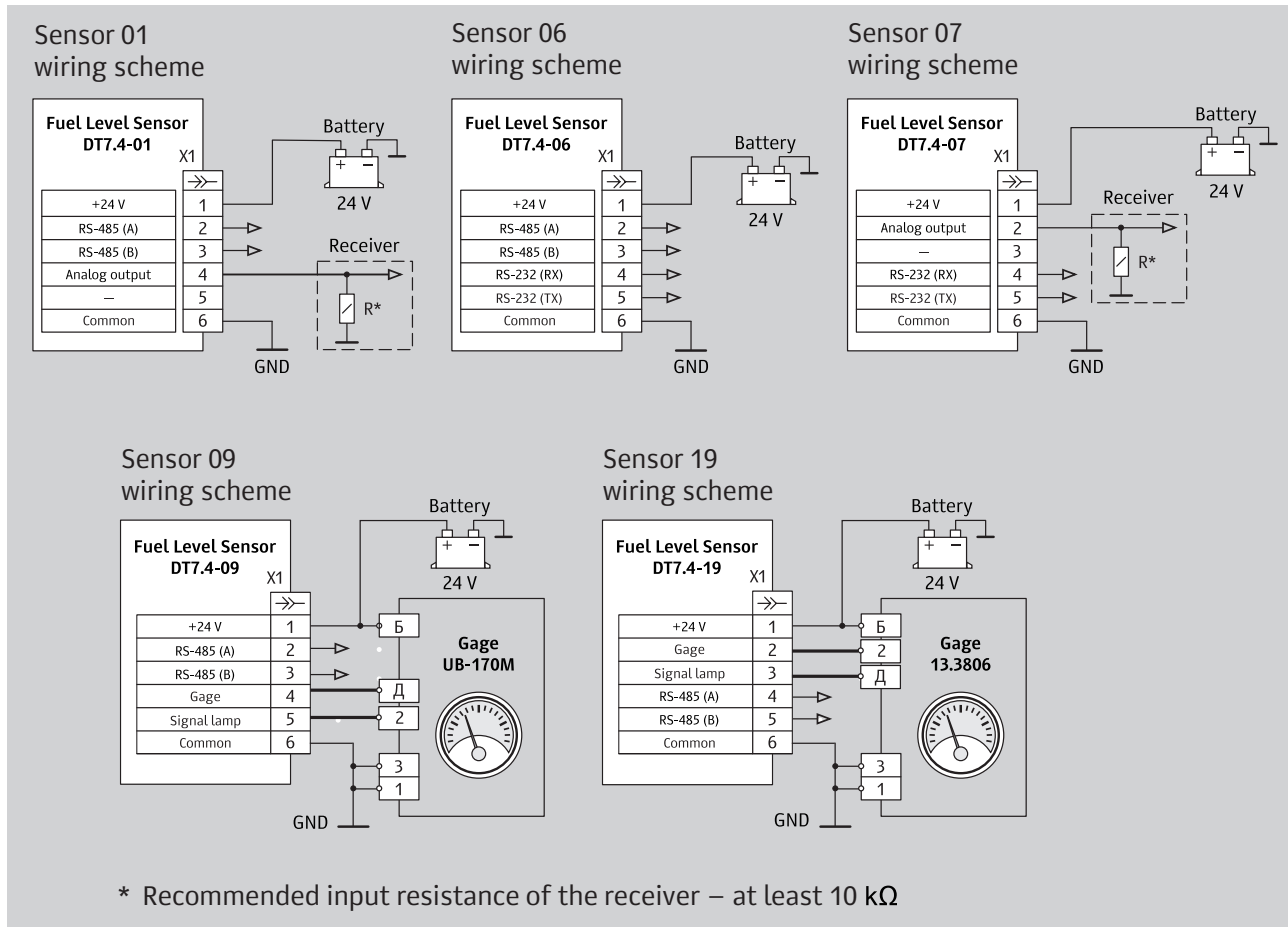
## Main specifications

Parameter	Modification DT7.4			
	01	06	07	09 (19)
Level measurement error	±1%			
Additional level measurement error in the entire operating temperature range	1,2%			
Rated power supply voltage	24 V			
Rated current consumption	up to 25 mA	up to 20 mA	up to 25 mA	
Operating supply voltage range	10...50 V			10...32 V
Operating mode acc. to GOST R 52230-2004	continuous			
Galvanic isolation voltage	500 V			
IP rating of sensor components (as per GOST14254-96)	IP67			
Temperature range: — operating — storage	-40...+80°C -50...+80°C			
Digital interface	RS-485	RS-485, RS-232	RS-232	RS-485
Analog interface	0,5...4,5 V 0,5...9,5 V	—	0,5...4,5 V 0,5...9,5 V	—
Bit rate	19,200 bps			
Allowed vibratory loads: — maximum acceleration — within the frequency range	50 m/s <sup>2</sup> 50...25 0Hz			
Maximum permissible current: — to fuel level gage receiver — to signal lamp	— —			150 mA 150 mA

## Overall and mounting dimensions



## Wiring scheme



## Sensor installation and operation

The fuel level sensor is installed in the fuel tank in the position of floating level sensor. Measuring tube end shall be located at least 20 mm above the bottom of the tank. See recommended sensor mounting options in the installation and setup instructions at [www.rez.ru/catalog/sensors/level/dt74](http://www.rez.ru/catalog/sensors/level/dt74).

Wires and harness connected to the fuel level sensor must comply with GOST 23544-84 requirements and be properly secured to the vehicle body. The fuel

level sensor is connected according to the wiring scheme.

The sensor is to be used with properly functioning vehicle electrical equipment, provided there is a charged battery in the vehicle.

As part of vehicle maintenance, check the secure fastening of sensor housing, proper connection and intact insulation of supply wires. Tighten connections and remove dirt, as necessary.

## Комплектность

Standard sensor components:

- fuel level sensor;
- installation kit;
- datasheet.

Installation kit components:

- socket 704050031;
- harness 127;
- harness 455 in corrugated or metal hose.

Harnesses have a mating part of connector. Harnesses of different length are available.

000 Scientific and Production  
Enterprise Rezonans  
Tel./fax: +7 (351) 7313000, 2544577  
ul. Mashinostroiteley, 10B, Chelyabinsk, 454119  
[www.rez.ru](http://www.rez.ru), [rez@rez.ru](mailto:rez@rez.ru)

## Our products

Monitoring, protection and control systems  
for mobile applications

Safety devices for lifting applications

Wireless Devices

Sensors

Wireless Devices

Joysticks

Display Consoles and Indicators

Voltage Converters

Relays and Regulators